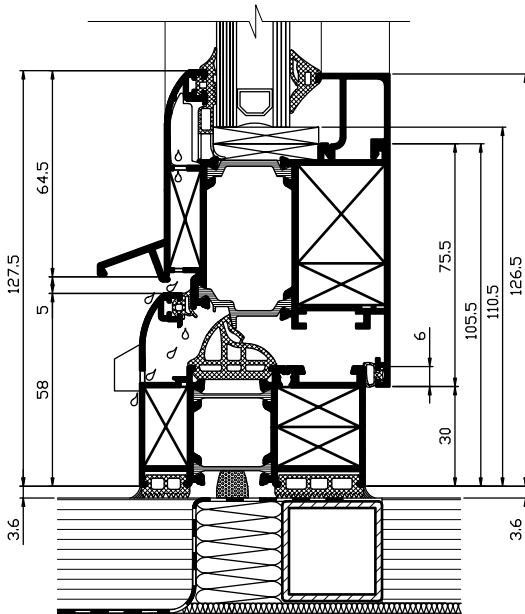




5  
4  
3

OPENING WINDOW AND DOOR  
SYSTEM WITH THERMAL BREAK

# ELEGANT STRAIGHT OR CURVED LINE SOLUTIONS WITH 60 mm STRAIGHT LINE WIDTH OR 67.5 mm CURVED LINE WIDTH



## FEATURES

$U_w = 1.2 \text{ W/m}^2\text{K}$

Sashes for PVC hardware which enable:  
multiple locks, hinges adjustment and fast installation

EPDM gasket for superior thermal insulation,  
drainage and air impermeability

Double glazing from 18 mm up to 49 mm

Hidden vent solution

# E45

OPENING WINDOW  
AND DOOR SYSTEM  
WITH THERMAL BREAK

## DESIGN

NEW ELEGANT SERIES WITH  
CONCEALED SASH

MULTIPLE VARIATIONS OF DOOR FINISHING  
AT FLOOR LEVEL

COMPLEMENTARY PROFILES ENABLING  
A WIDE RANGE OF CONFIGURATIONS

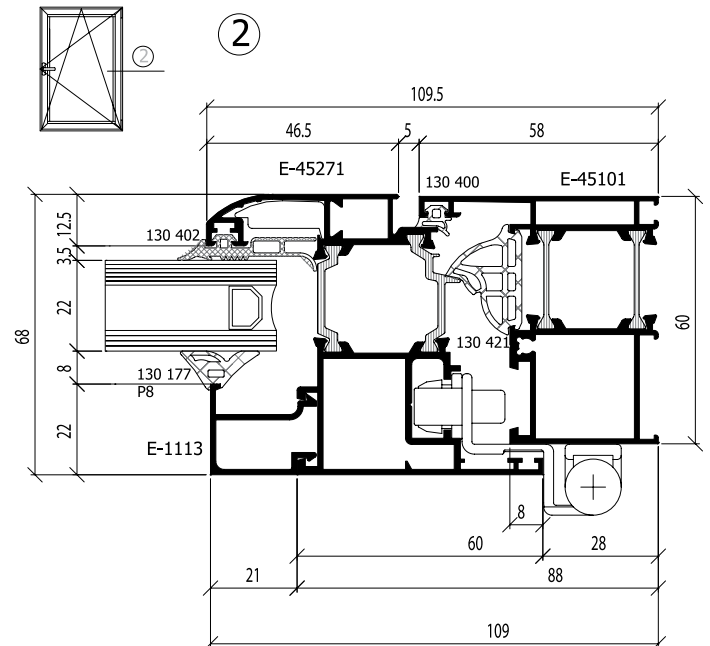
## DETAILS

Optimized for the highest structural stability whilst  
using a lower amount of aluminium content

Profile reinforcement at load bearing points

Opening elements - opening at vertical axis, tilt and  
turn, opening at top or bottom horizontal axes, folding  
doors, parallel sliding

Reliable horizontal and vertical mechanisms



[etem.com](http://etem.com)