



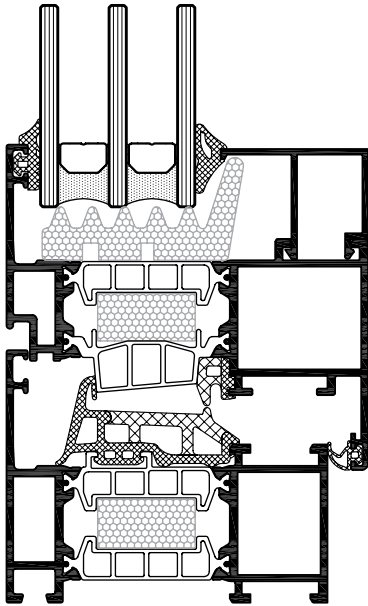
5  
7  
E

OPENING WINDOW AND  
DOOR SYSTEM WITH  
THERMAL BREAK

---

**E75 IS A SYSTEM  
CORRESPONDING TO  
THE MOST MODERN  
REQUIREMENTS OF THERMAL  
INSULATION, FUNCTIONALITY  
AND AESTHETICS**

---



**FEATURES**

---

$U_w = 1,14 \text{ W/m}^2\text{K}$

---

Additional insulator under the glass

---

Additional insulator in the thermal break chamber

---

---

Co-extruded additional gasket

---

Co-extruded central gasket

---

Better drainage and air permeability

---

39 mm polyamides width

---

# E75

OPENING WINDOW AND  
DOOR SYSTEM WITH  
THERMAL BREAK

## DESIGN

CO-EXTRUDED CENTRAL GASKET  
FOR BETTER THERMAL INSULATION,  
DRAINAGE AND AIR PERMEABILITY

## SECURITY

POSSIBILITY OF MOUNTING ANTI-  
BURGLAR HARDWARE FOR BETTER  
SECURITY PERFORMANCE

## EFFICIENCY

EXTRUDED CORNERS FOR CRIMPING  
MACHINE ALLOWING BETTER  
CONNECTIONS AND REDUCED  
ASSEMBLY TIME

## DETAILS

Excellent thermal insulation

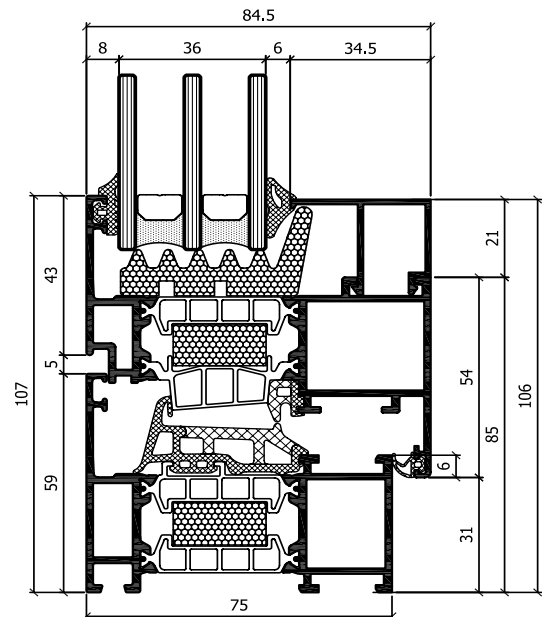
Elegant straight design - 75 mm system width

39 mm polyamides width

Additional insulator in the thermal break chamber

Co-extruded central gasket

Additional insulator under the glass



[etem.com](http://etem.com)